

CULTURE : IDENTITY : PARTICIPATION : ART



Free



Most venues are easy access venues



1 – 24 June 2007

AUCKLAND FESTIVAL OF PHOTOGRAPHY

## Festival Message



Photography has played a major role in my life for over 50 years, and will continue to do so.

Since working as a studio assistant in London in the 1950s, and producing my first New Zealand photographs in 1960, I have witnessed extraordinary changes in photographic technology and practice. I am particularly pleased to see that these changes, together with developments in communication, have meant not only that photography is recognised today as a highly collectable art form, but also

that it is now possible to present in New Zealand an exciting photographic festival of this scope and scale.

I am honoured to be the first of the Auckland Festival of Photography's annual Patrons. And I am especially happy to promote its focus on culture, identity, participation, and artistic excellence.

*Marti Friedlander*

Marti Friedlander  
Festival Patron 2007

The Auckland Festival of Photography is the fastest growing visual arts celebration of culture, identity, participation and art in the region since 2004 and is now essential viewing for anyone interested in recent developments in New Zealand photography. We represent no one group, gallery or artist; but we celebrate you all.

This self curating festival relies on a raft of curatorial experts acknowledged in their own field; we invite the professional and the novice to sit comfortably alongside one another in the belief of developing a unique energy and artistic merit that is the Auckland Festival of Photography. This is your Festival, created by you. To the power of the individual photographer, we bow.

The annual Creative Exposure Festival is produced by the Auckland Festival of Photography Trust; a not-for-profit charitable trust working to further the presence and awareness of photography in Auckland through joint programming, audience development and profile-raising activities.

We gratefully acknowledge our sponsors, artists, galleries and funding agencies and thank you all for your ongoing support of this unique free regional festival.

Auckland Festival of Photography Trust  
[www.photographyfestival.org.nz](http://www.photographyfestival.org.nz) • [info.photo.festival@xtra.co.nz](mailto:info.photo.festival@xtra.co.nz)

**Festival Team:**  
Julia Durkin, Kirsty MacDonald,  
Elaine Smith and Sairam Sridharan

**Media Manager:**  
Greg Ward

**Programme Designer:**  
Secret Life Media

**Sponsorship Consultant:**  
Christopher Johnstone

**Website:**  
NZ Internet Services

**Thanks to:**  
Volunteers from Volunteering  
Auckland, and Alistair Kwun (*Light  
2006*), Michelle Lafferty (*Blog*), and  
Myles Hicks (*Manukau Flightpath*).

*Programme details subject to change*

### Sponsors & Donors



© 2007 Auckland Festival of Photography Trust  
All images are reproduced courtesy of the copyright owners.



**Edith Amituanai: First XV**

**Anna Miles Gallery • 23 May – 23 June**

Opens Wed 23 May at 6pm.

Hours Wed, Thu, Fri 11–6, Sat 11–4 and by appointment.

Where Suite 4j, 47 High St, Auckland City

T 377 4788 • M 021 47 10 47 • W [www.annamilesgallery.com](http://www.annamilesgallery.com)

Edith Amituanai's First XV is the result of her travel to Italy and France to photograph first and second generation New Zealand Samoans living and playing professional Rugby in Europe. The photographs look at her subjects' interiors and the objects that filled their homes, as well as the family members who had made the decision to migrate with them to these European countries.

"I learnt about their immersion in French culture and the difficulties of learning Italian. I participated in their adopted dining customs and shared their appreciation of new tastes while understanding their desire to drive two hours to KFC. I watched them try to fit into the team, train, and make plans to return to New Zealand post-Rugby. In me, and my family, they saw elements of home; in my subjects I saw opportunity like that my parents described of New Zealand. The work evolved into a series of portraits of my generation of New Zealand Samoans."

*Anna Miles Gallery*

*I. Monsieur Philemon Toleafoa. Edith Amituanai.*

CULTURE





## Light

### Stanbeth Gallery

1 June – 24 June

Hours Tue–Fri 10–5, Sat–Sun 11–5.

Where Ground floor, 24 Custom Street East, Britomart, Auckland City

T 307 7055 • E [info.photo.festival@xtra.co.nz](mailto:info.photo.festival@xtra.co.nz)

There are over 181 different ethnicities making up 21st century Auckland and one community which is making a growing impression with their contribution to our colourful cultural landscape is the Indian community. One of the most popular festivals on the Indian calendar is Diwali, the Festival of Lights, and increasingly this is becoming one of the most eagerly awaited festivals in Auckland's cultural year.

Traditionally Diwali was a religious festival particular to Hindus, Sikhs and Jains but increasingly Indians of all faiths celebrate Diwali as a national festival, both in India and in Indian communities around the world. Diwali is a time when observers decorate their homes with lights and flowers, give gifts and set off fireworks to celebrate life and hope and the victory of good over evil, light over darkness. Auckland's Diwali revellers of 2006 were encouraged to share their photographs capturing the celebrations at home or at public events such as the Britomart festivities. The result is *Light*, an exhibition comprising the 60 best images from 45 photographers who were selected from the hundreds of public submissions. Just as Diwali celebrates the awakening of our inner spiritual light, *Light* celebrates the capturing of light through the medium of photography.

CULTURE



1. Whoopee. Meng Cui (Sean).



## Another View

A Selection of 20th century International Photographs from the Seresin Family Collection

**Auckland War Memorial Museum**

1 June – 1 July

Hours Daily 10–5

Where Pictorial Gallery, Auckland War Memorial Museum, The Domain, Parnell, Auckland

T 309 0443 • W [www.aucklandmuseum.com/](http://www.aucklandmuseum.com/)

Michael Seresin has over many years assembled a fascinating collection of images by international master photographers. The exhibition of 36 works offers a rare opportunity to see some of the most famous images in photographic history in their original form as vintage black and white prints. The photographers include some of the best known names from early to mid 20th century, including Henri Cartier-Bresson, Andre Kertesz, Josef Sudek, Bill Brandt, and Man Ray among others. Artists and musicians are a particular focus, including two portraits of Picasso.



2. *Prostitute Storyville. EJ Bellocq, 1873 – 1949, New Orleans c1911–13*  
 3. *From the shores of the Bosphorus. Baron de Meyer.*

Exhibition courtesy of the Seresin Family.  
 Organised by Cressida Bishop and the Millennium Public Art Gallery, Blenheim.  
 Toured by Exhibition Services Ltd.



### Seresin Collection Floor Talk

Mon 4 June • 11am

International photographer, author and curator Harvey Bengé will talk about his response and other possible responses to the Seresin Collection. He will discuss the significance of the photographs, what they mean to him, what they say about the photographers, how the collection works as a whole and what it says about the collector.

CULTURE





Al Jazeera: The Listening Post  
 – Wed at 5.30pm, Thu at 2.30pm.  
 DWTV: Arts 21 – Wed at 9pm.

## A Series Of Talks About Photography

### Auckland Art Gallery



**Walk & Talk**  
 Sat 2 June • 10.30am  
 Sat 16 June • 10.30am

A photo walk and tour of several of the central Festival exhibitions with Ron Brownson, Senior Curator at Auckland Art Gallery. Limited to 25. Free. Bookings essential.  
**E** info.photo.festival@xtra.co.nz

**Greenpeace**  
 Sat 16 June • 2pm

Environmental campaigners, Greenpeace have decades of local history. They use photography as a tool of their campaigning. They offer a talk on the photography of Greenpeace activities. This will feature images from their archive. Free. No bookings required.

**W** <http://www.greenpeace.org/new-zealand/press/>

**Ben Plumbly**  
 Sat 16 June • 3.30pm

Director of Art at ART+OBJECT, Ben gives an insightful talk into the current market for collecting photography. Questions & answers on completion.

### Auckland Museum



**Seresin Talk**  
 With Harvey Bengé.

Mon 4 June • 11am

**Krzysztof Pfeiffer**  
 Thu 7 June • 2–2.30pm

Auckland Museum photographer Krzysztof's unique talent, skill and photographic eye arise from over 30 years experience in different fields of photography including forensic, industrial, scientific and movies. Join him in the new Auditorium to see a selection of extraordinary images taken during the past 15 years and hear some of the stories behind them.

**Daguerreotype to Digital**  
 Sun 24 June • 11am

Gordon Maitland, curator, & Shaun Higgins technician, are the guardians of the Museum's incredible pictorial archives. Tour their workrooms for a fascinating display of photograph albums, and intriguing items such as daguerreotypes, ambrotypes, chrysoleums, opalotypes, and calotypes. On computers, scroll through a collection of compelling images and view on light tables a selection of photographic formats (eg, 35mm slides, lantern slides, glass plate negatives). This is a rare chance. Limited to 12. Bookings essential. **T** 309 0443.

*I. Ronald MacDonald Leaves. © 2004 Greenpeace/Phil Walter.*

CULTURE





## All Dogs Shot

Photographs by Roger Donaldson  
Selected images from 1963 to 2003

**Lopdell House • 14 April – 10 June**

**When** 10–4.30 daily.

**Where** 418 Titirangi Road, Titirangi, Waitakere City.

**T** 817 8087 • **E** info@lopdel.org.nz • **W** www.lopdel.org.nz

Best known for the making of landmark movies including *Sleeping Dogs*, *Smash Palace* and *The World's Fastest Indian*, Roger Donaldson has always armed himself with a camera. In 1965 Donaldson came to New Zealand from Australia on a summer holiday – fell in love with the country, skipped the Aussie draft, abandoned his career as a geologist and pursued his passion for photography. Much of his time was spent living and filming in West Auckland. Lopdell House Gallery in Titirangi is very proud to be hosting Roger Donaldson's first public exhibition of photographs. *All Dogs Shot* presents a stunning collection of black and white photographs shot in New Zealand and around the world.

Every Thursday night during the exhibition, Lopdell House Gallery will be screening a selection of Donaldson's early films in the gallery, by courtesy of the NZ Film Archives. A rare chance to see some gems from the 60s and 70s.

3. Roger with Camera in Nelson. Roger Donaldson.

## Wild Creations

Twelve Artists – Twelve Locations

**Lopdell House • 15 June – 12 August**

**When** 10–4.30 daily.

**Where** 418 Titirangi Road, Titirangi, Waitakere City.

**T** 817 8087 • **E** info@lopdel.org.nz • **W** www.lopdel.org.nz

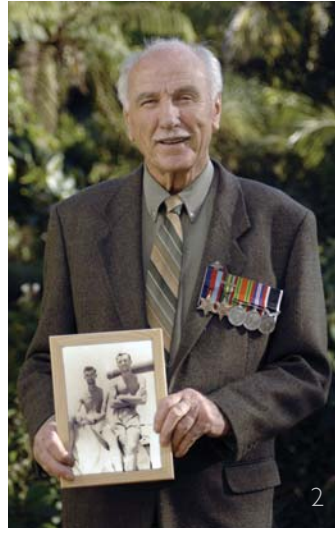
*Wild Creations* is an artists-in-residency programme run by the Department of Conservation and Creative New Zealand. Three six-week artist residencies are offered each year in a range of conservation sites.

Artists include Tabatha Forbes, Darren Glass, Waikarere Gregory, Christine Hellyar, Alison Isadora, Monique Jansen, Naomi Lamb, Fiona Pardington, Jo Randerson, Jordan Reyne, Zoe Roland, Rebekah Wild.

2. Milford Waterfall. Tabatha Forbes.



CULTURE



### Will Calver: RIB with a View

Ocean Gallery • 1 June – 1 July

Hours Mon–Fri 10–6. Sat–Sun 10–4.

Where Next to the NZ Maritime Museum, 147 Quay St, (cnr Quay St & Hobson St), Auckland City

T 357 0881 • W [oceanphotography.co.nz](http://oceanphotography.co.nz)

A visual celebration of the harbour and its rich heritage from photographer Will Calver. Will's critically acclaimed work can be seen here and is also available to purchase as limited edition prints. Ocean Gallery also features work by other artists and photographers, all with a maritime theme. The beautiful large-framed black and white prints contrast quite dramatically with vivid full colour images. Will is also often in the gallery and happy to discuss the images on display.



1. Bow Tower. Will Calver.

### Nikki Payne: Navy Veterans in Focus 1941 – 2006

Takapuna Library • 1 June – 24 June

Hours Mon, Thu 9am–8.30pm. Tue, Wed, Fri 9–5.30. Sat–Sun 9.30–4.

Where The Strand, Takapuna, North Shore City

T 486 8460 • W [www.shorelibraries.govt.nz](http://www.shorelibraries.govt.nz)

The exhibition *Navy Veterans in Focus 1941–2006* features large-scale photographs of Royal New Zealand Navy veterans, taken by photographer Nikki Payne. The photographs tell the stories of twenty individual Navy veterans and through them the story of the Navy, from World War II to recent campaigns and operations in the Persian Gulf, East Timor and Afghanistan.

*"We were welcomed by Captain Bell, who introduced himself as Captain Bell from the 'Exeter' (which we had just lost). Then he began to tell us how he had just seen the Admiral and things were going well in the war. We were sort of looking around where we were standing and all the buildings were scarred with shrapnel and there were holes in everything and we thought, if this was winning ..."*

... Leading Seaman S P Money, World War II



2. Leading Seaman S P Money. Nikki Payne.

CULTURE





### Ingrid Boberg: Dead Nice

**Whitespace • 28 May – 16 June**

**Preview** Mon 28 May 5.30–8pm.

**Hours** Tue–Fri 11–6, Sat 11–4.

**Where** 12 Crummer Rd, Ponsonby, Auckland

**T** 361 6331 • **M** 021 639 789 • **W** <http://www.whitespace.co.nz>

In this exhibition of large format digital photographs, Boberg orchestrates artificial scenes evoking profound philosophical discourse. The elaborate compositions of found figurines are instrumental in enabling the viewer to be both audience and narrator as they navigate their way through a compilation of mini-scenarios and suburban landscapes.

*Dead Nice* further develops some of the central ideas from Boberg's previous show *Home Beautiful* (2005, Auckland Festival of Photography), which was exhibited in full in Los Angeles in 2005, with selected works travelling to Rome and Pingyao as part of Wonderland in 2006.

3. Everyday Pedigree. Ingrid Boberg, 2007. Archival inkjet print on aluminium.



**Dead Nice with Ingrid**

Thu 7 June • 5.30pm

### Contemporary Photography

**Gow Langsford Gallery • 30 May – 23 June**

**Opens** Tue 29 May 6pm.

**Hours** Mon–Fri 10–6, Sat 11–3.

**Where** cnr Kitchener & Wellesley Sts, Auckland City

**T** 303 4290 • **F** 303 4302 • **E** [info@gowlangsfordgallery.co.nz](mailto:info@gowlangsfordgallery.co.nz)

**W** <http://www.gowlangsfordgallery.co.nz/>

A contemporary photographic exhibition by one of Auckland's leading art dealers. Renowned for their excellence, the gallery represents approximately twenty artists from New Zealand, Australia, and further afield internationally. Curated exhibitions and projects also form a strong part of their exhibition programme. This exhibition is presented as part of the Auckland Festival of Photography. Further details available on line.

A R T

gow  
langsford  
gallery



7



## Project Lomo #2

RM 103 • 7 June – 20 June

When Opens 6 June at 6pm. Then Thu 2–5, Fri 1–5, Sat 12–4.

Where 1st Floor, Achilles House, Custom St East, Auckland City

T 378 8987 • M 021 164 9265 • E info@rm103.org

The uncontrollable, cheap 'plasticky' nature of Lomo cameras disarms those used to complete technical control and serves as an inviting introduction to the world of photography for the uninitiated ...

"don't think, just shoot!". Photographers/Lomographers: Akinobu Uchimoto (Japan), Bradley Fafejita, Conor Clarke, Milana Radojicic, Hannah Smith (Japan), Jo Galvin, Anna Blackburn, Straton Heron and Joshua Lynn.

2. Best Friends, Jo Galvin.

ONE  
ZERO  
THREE

## PhotoForum 2007

Artstation • 6 June – 23 June

Opens Tue 5 June 5pm.

Hours Mon–Fri 9–5. Mon–Thu 6pm–9pm. Sat 10–4.

Where 1 Ponsonby Rd, Ponsonby.

T 376 3221 • E artstation@aucklandcity.govt.nz

PhotoForum 2007 is an exhibition of work by 30 photographers affiliated with PhotoForum Inc, founded in 1974 to support independent photographers. It has supported a wide range of leading photographers who have challenged and inspired new generations through their example. In this show viewers will be able to catch up on the projects of both new artists and influential practitioners including the founder John B Turner, and artists from every decade such as Dr Gary Blackman who first made his mark as an independent photographer in the 1950s and had a major retrospective at the Dunedin Public Art Gallery in 2003.

Artists include: Abby Storey, Alan Knowles, Andrew Ivory, Ann Orman, Bill Mori, Bruce Connew, Bruce Ross, Darryl Fausett, Davina, Dorina Jotti, Faye Norman, Gabrielle McKone, Gary Blackman, Haru Sameshima, James Gilberd, Jenny Tomlin, John B Turner, Julian Ward, Kapil Arn, Karen Crisp, Karen Lee, Lynn Houghton, Mark Adams, Neil Finlay, Paul Pachter, Reg Fuez, sada, Stella Daniels, Syd Moore, Tim Mackrell, and Trish Macky.

1. Virgin Mary and Others, Lynn Houghton.

ART



Haruhiko Sameshima Fri 8 June 1pm

Bruce Connew Sun 17 June 1pm

8



ARTSTATION103



### Journeys

**Artful Gallery • 29 May – 16 June**

**Hours** Wed–Fri 10–5. Sat 11–4.

**Where** | Morgan St, Newmarket • **T** 529 5036

In this retrospective, Bill Mori journeys back in time, then through India, Nepal and China. He celebrates his return to New Zealand and recent journey to fatherhood.

Bill is part Maori, Italian, Scottish and Irish. Influences include Chinese Buddhist, Tibetan, Indian Islamic and Hindu art, Western and NZ painting. His subject matter includes landscape, still life and portraits. Bill is Head of Photography at AUT, and the exhibition includes work from his students. His photographs are hand-printed with enlargers on light-sensitive paper.

The exhibition also features work by AUT students Zoe Ikin, Erin Gaffney and Sam Holliss.



3. Tutukaka Heads Study, Bill Mori.

### Tim Mackrell & John B Turner: Te Atatu 2

Photographs of Te Atatu Peninsula

**Corban Estate Arts Centre • 25 May – 1 July**

**Hours** Daily 10–4.30

**Where** 426 Great North Rd, Henderson, Waitakere City

**T** 838 4455 • **E** info@ceac.org.nz • **W** www.ceac.org.nz

Tim Mackrell and John B Turner have independently been photographing aspects of Te Atatu Peninsula, where John has now lived for nine years and Tim for five. Tim Mackrell tends to concentrate on aspects of the new housing and commercial developments, and contemporary artifacts found on his walks. By way of contrast John Turner concentrates on people: people in their workplace, on the street, in their homes and at leisure. Both photographers work at the University of Auckland and have a background in news and art photography.



4. Horse Yeovil Road, Tim Mackrell.

5. Te Atatu Meats, John B Turner.

ART



**John Turner** Sun 10 June 11am



9



**Meanderings**  
 through New Zealand landscape photography  
**John Leech Gallery • 30 May – 23 June**

**Opens** Tue 29 May at 5,30pm

**Hours** Mon–Fri 10–6, Sat 11–3.

**Where** cnr Kitchener Street & Khartoum Place, Auckland City

**T** 303 9395 • **F** 303 9397 • **W** www.johnleechgallery.co.nz

Now we are aware of the damage we have inflicted on our fragile planet, historic landscape photographs carry a particular poignancy. This exhibition, spanning one hundred and twenty years, shows how photographers not only recorded change but sought out beauty and form in wilderness vistas, farmland and even the concrete jungles of today's urban society.

**JOHN LEECH GALLERY**  
HISTORICAL AND CONTEMPORARY NEW ZEALAND ART

1. Cabbage Trees, 25-mile, Lake Wakatipu, NZ, c. 1890. Albumen print. Hart Campbell & Co.

**North Shore Photographic Society**  
**Lake House Arts Centre • 16 June – 24 June**

**Hours** Daily 10–4.

**Where** 37 Fred Thomas Drive, Takapuna. • **T** 486 4877

From a selection of photographic images submitted from over 100 members, these outstanding and creative photographs will be exhibited at the North Shore Photographic Society's exhibition.

Amongst the exhibitors are photographers who have acquired a Fellowship in the Photographic Society of New Zealand's Awards, namely Ron Fitz-William, Judith Hodge, Keith Britton, Breen Porter; Peter McMahon and Brian Cudby. In addition, images by Lynn Clayton, APSNZ FIAP, a noted Auckland photographer, will be on display.

A  
R  
T

Both monochromatic and colour images derived from either film or digital source will be featured covering a large and diverse variety of subjects.



2. Ratana Church, Jean Moulin LPSNZ.



### Moving Still

**The Gus Fisher Gallery • 8 June – 14 July**

**Hours** Mon–Fri 10–5. Sat 12–4.

**Where** 74 Shortland St, Auckland City • **T** 373 7599 ext 86806

An exhibition examining the zone between the still and the moving image, drawing attention to how differently we view photographs compared to moving images.

Most of the exhibited works are based on the photographer's desire to capture a sense of movement, despite photographs being, according to Susan Sontag, "a neat slice of time". We have not included work where a sense of movement is merely a consequence of a longer exposure time. When the camera shutter opens, the world and its image are one – the shutter closes, the world moves on.

Artists include: Peter Black, Gary Blackman, Rhondda Bosworth, Ben Cauchi, Darren Glass, Gavin Hipkins, Anne Noble, Max Oettli and Natalie Robertson and Ann Shelton. Rutherford Rede exhibition from McNamara Gallery Photography.



3. Click. Ben Cauchi.

### Gordon H Brown: Hotel North America

**The Gus Fisher Gallery • 8 June – 14 July**

**Hours** Mon–Fri 10–5. Sat 12–4.

**Where** 74 Shortland St, Auckland City • **T** 373 7599 ext 86806

*Hotel North America* is the first exhibition of new prints of black and white photographs taken by Gordon H Brown during a 1974 trip to the United States and Canada. They were taken whenever he had film left in the camera after photographing display units and techniques in the art museums and institutions he visited. These images provide visual essays that collectively speak of the subtle variations between locations, as well as Brown's response to these nuances during his first (and only) major trip abroad.

Brown is best known as an art historian, having authored books on New Zealand painting and Colin McCahon, but he has also been seriously taking photographs since 1950. A number of his photographs are in the University of Auckland collection, including images of Colin McCahon, and a selection of these will be exhibited alongside *Hotel North America*.



4. The Barclay Hotel, Philadelphia. October 1974. Gordon H Brown.

ART





**OLYMPUS** AUCLAND photo day™

**24 Hours in Auckland • 9 June 2007**

Of all Creative Exposure's exhibitions and events, Olympus Auckland Photo Day best captures the spirit and themes of the Festival – themes of participation, diversity, inclusion and a celebration of the art and many identities making up Auckland's unique culture.

PARTICIPATION

For one otherwise entirely ordinary Auckland day each year, all Aucklanders are asked to capture a moment in their Auckland, in whatever way it manifests itself to them through a camera lens. The only prerequisite to entering the event is having access to some kind of camera and being in our great city of Auckland on the day. The resulting images are as diverse in form, subject and mood as the Aucklanders behind the cameras, and though there can be only one winner, the many and varied individuals making up our Auckland and their lives are signified through each individual entry, telling a story of all of our lives and the city we live in and over consecutive years, building a photographic archive of a day in the life in Auckland.

See [www.photographyfestival.org.nz](http://www.photographyfestival.org.nz) for prizes and entry details.  
First prize sponsored by —

**OLYMPUS** **First Prize** Olympus E-410 D-SLR with TV

Other prizes sponsored by —







## Auckland Photo Day 2006

**Aotea Gallery** • 1 June – 24 June

**Hours** Daily from 9am..

**Where** Aotea Centre at The Edge, Aotea Square, Auckland City

**T** 309 2677 • **W** [www.the-edge.co.nz](http://www.the-edge.co.nz)

An exhibition of the top 30 finalists from over a thousand entries taken between midnight and midnight on Saturday 10 June 2006. Includes the winning photo called *Dressed Up Freeway* by Philip Freeman..

Plus on slideshow the never before exhibited selection of entries that didn't make it through the judging process – this is an exclusive opportunity to see the judges shortlist of over a hundred photographs by Aucklanders on Auckland Photo Day 2006. You get to judge for yourself!

See [www.photographyfestival.org.nz](http://www.photographyfestival.org.nz) for 2004 and 2005 on line.



**2006 images above:** **1 (winner)** *Dressed Up Freeway*, Philip Freeman. **2** *Drenched*, Gareth Wills. **3** *Kenny and Wheel*, David Xiong. **4** *Victoria Skate Jump*, Rowena Baines. **5** *King's College First XV*, Murray Helm. **6** *Untitled*, Lauren Wright.

**win Lens Kit of 14-42mm and 40-150mm lenses**

rrp \$1,899.00



- In market May 2007
- Easy and convenient to carry – world's smallest D-SLR
- Easy to use – Full Live View
- Great image quality – 10 megapixel
- Easy maintenance – Dust reduction
- Brilliant display quality – 2.5-inch HyperCrystal LCD
- 176° viewing angle



PARTICIPATION

13



## Auckland Photo Blog

Theme: Heart of the City

1 June – 30 June

Where <http://www.photographyfestival.org.nz/photo-blog/index.cfm>

This is a digital online Festival exhibition created by you!

Do you live, work or play in the Heart Of the City area? Then we want your photos on the Auckland Photo Blog during the month of June. This is open to anyone who can click or has clicked the shutter in the Heart of the City.

From the quiet moments in the day to the buzz of the city nightlife, taken from your office, your apartment, your car ... or just send in your best shots from your own photo albums and add comments for the blog.

A prize will be awarded to the Photo of The Month photographer!

Photos can be of any subject or theme as long as they are photographed within Auckland's CBD area (refer to map on website) and were taken between 1 July 2006 and 31 May 2007.

Subject ideas are events or activities, heritage, development, culture, people, interaction and how the photographer sees Auckland's CBD.

We will select the Photo of the Month from the entries.

*Heart of the City* is the promotional and lobby group for Auckland's CBD.

This is the first year *Heart of the City* is involved with the Auckland Festival of Photography as a way of building a collection of images that portray the many aspects of life in the CBD.

See [www.hotcity.co.nz](http://www.hotcity.co.nz) for prize details.



PARTICIPATION

1. Amalgam. Katie Hoy. 2. Untitled. Angela Broad. 3. City by Night. 2. Agata Polak.



## A Bit Of A Do

**The Trusts Stadium** • 2 June – 15 June

**Hours** Daily from 9.30.

**Where** 65–67 Central Park Drive, Henderson • **T** 970 5200

**W** <http://www.photographyfestival.org.nz/>

The 2007 *A Bit of A Do* exhibition will be hosted at the The Trusts Stadium in Henderson for the first year since its early beginnings in Avondale.

Each year the Festival asks Auckland's photographers to share their photographs with the wider community and show us their diverse ways of celebrating. *A Bit of a Do* features a selection of images documenting celebrations rituals, sports and cultural events and family get-togethers across Auckland. Following the public submission process, the selected exhibition images range from people sleeping off the night before, Chinese dancing, weddings, motor bikers, gay rights protesters and musical moments.



4. Soul Jazz. Jay Farnworth. 5. Protest. Wiremu Te Kiri 2005.



### A Series Of Talks On Photographic Technique Auckland Central Library

In June: Tuesdays at 3pm, Thursdays at 6pm, Saturdays at 10am

Free classes in the basics of digital photography. The classes cover how to download, save and edit photos, how to share photos with family and friends via email or websites. To enrol for a class or for more information please telephone (09) 377 0209 or go to [www.aucklandcitylibraries.com](http://www.aucklandcitylibraries.com)



### Dave Smith at Britomart Festival Office

Thu 14 June • 6pm • 24 Customs Street East, Level 1.

Dave Smith talks about infrared imagery with his D70. Includes slideshows of his images from around New Zealand. Dave is a semi-professional photographer and teacher from the UK.

6. Sunrise Over Lake Taupo. Dave Smith.

PARTICIPATION





### Another View of Auckland

brought to you by SKYCITY

#### Auckland Photo Blog | April – 30 April

Where <http://www.photographyfestival.org.nz/photo-blog/index.cfm>

Online blog for photographers who want to see their talents put to the test by shooting a photograph to go on a billboard in the CBD in Auckland during the Festival season. All images must be taken around the Auckland region. See entry details on line. The top 10 selected from this April blog will appear at SKYCITY as detailed below.

#### Billboard People's Choice 7 May – 20 May

Where Blend Foyer; Level 3, SKYCITY Complex, Federal St, Auckland.

An opportunity to view and vote for your favourite of the top 10 blog entries selected to be part of the People's Choice Exhibition for the SKYCITY Billboard competition.

#### Billboard on Fanshawe Street | June – 30 June

See your winning entry on this!



#### Metro Canon Young Photographers Awards

Aotea Gallery • 12 June – 24 June

Hours Daily 9–5.

Where Aotea Centre at The Edge, Aotea Square, Auckland City

T 307 2677 • W [www.the-edge.co.nz](http://www.the-edge.co.nz)

A selection of the 2006 Metro/Canon Young Photographers Award Exhibition – some of the best new local talent take on different genres of photography from portraits to photojournalism to documentary. Includes the overall award winning image by Sam Hartnett.



1. Untitled. Sam Hartnett.

PARTICIPATION





## Auckland NZIPP Group Exhibition

**The Vero Centre • 14 June – 2 July**

**Opens** Wed 13 June 6pm

**Hours** Mon–Fri 7am–6pm

**Where** The Vero Centre Foyer, 48 Shortland St, Auckland City

The New Zealand Institute of Professional Photography hosts a group exhibition of their qualified Auckland members. The NZIPP provides a professional cutting edge to the world of photography and in this people exhibition we see selected works from a group of their best shooters.



3. Untitled Chris Trill.

## Xavier Radić: Shades of Grey

*Between Black and White*

**Mairangi Arts Centre • 30 May – 16 June**

**Preview** 29 May at 5pm.

**Hours** Mon–Sat 9.30–4.

**Where** 20 Hastings Rd, Mairangi Bay, Auckland. • T 478 2237

A selection of analogue photographs portraying places and items from the past in rural New Zealand, revisiting captured memories of the past – between black and white.

Items of colour; between black and white, as of ashes or lead. Turning grey or white with age, going grey. Relating to old, seen as oppressed group. Cloudy and dull. Without sun: a cold grey day. Pale, as through tiredness or age. Grey and bitter. Dull, nondescript, without interest or character. Grey and faceless. Grey colour or pigment: intermediate tones of grey. Become grey with age. Of an older age or time.



2. Lost Children of Te Kopuru. Xavier Radić. Glinks Gully 1999. Analogue photograph.

ART





## In The Eye Of The Beholder

**Northart • 2 June – 20 June**

**Hours** Daily 10–4 (closed on Queen's Birthday).

**Where** Norman King Square, Ernie Mays St, Northcote Shopping Centre, North Shore City

**T** 480 9633 • **E** northart@ihug.co.nz

**Northart.**  
CommunityArtsCentre

creative  
communities  
722  
North Shore  
City

Young North Shore photographers share their take on the ordinary things of life. The exhibition *In the Eye of the Beholder* is the culmination of eight weeks tuition with Gabriella Trussardi. The children will learn how pinhole cameras work, how to use them, decide what to photograph, how to compose images, select works for exhibition and be a part of putting the show up. The project and exhibition are supported through a grant by Creative Communities/North Shore City.

2. Northart Community Arts Centre.

## Alexandra Cunningham: The Pegasus Project

**Oedipus Rex Gallery • 5 June – 23 June**

**Opens** Tue 5 June 5–7pm.

**Hours** Mon–Fri 11–5, Sat 11–3.

**Where** Upper Khartoum Place, Kitchener Street, Auckland City

**T** 379 0588 • **F** 368 7877 • **W** www.orexgallery.co.nz

Alexandra is a recent Elam graduate. Her exhibition documents the development of a town called Pegasus: a suburban utopia based on 'traditional Kiwi Family Values' 25 K out of Christchurch, in the 'rich and unspoiled' beauty of Canterbury. This ideal community can only be achieved by razing the existing farmland, leaving the scarred landscape that form images which make up this exhibition of large format edition prints.

## Andy Palmer: Past Lives

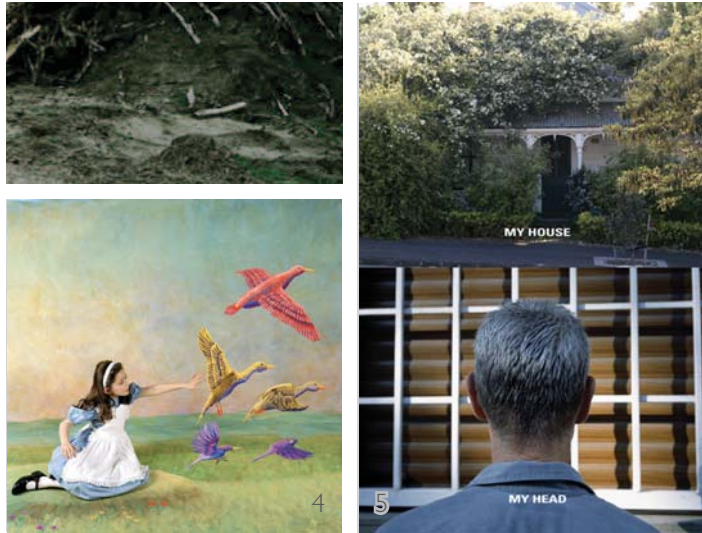
ART

In addition, Oedipus Rex Gallery presents *Past Lives*, an on-going documentary series exploring official and unofficial memorials around NZ by Wellington based photographer Andy Palmer. This exhibition features approximately 20 images.

**OREXART**  
OEDIPUSREXGALLERY

1. Pegasus 6 (2006). Alexandra Cunningham.  
3. Farmhouse, Tora (2004). Silver gelatin print. Andy Palmer.





### Contemporary Group Show

**Roger Williams Contemporary** • 29 May – 23 June

**Hours** Tue–Fri 10–5. Sat 11–3.

**Where** 61 Randolph St, Newton, Auckland City

**T** 377 2695 • **E** enquiries@rogerwilliamscontemporary.com

**W** www.rogerwilliamscontemporary.com

A group exhibition of New Zealand and international photography including Richard Orjis (New Zealand), Polixeni Papapetrou (Australia) and Geoffrey Heath (New Zealand).



4. *If You Go Away* (2004). From the series *Wonderland*, photographic print, edition of six. 1200mm x 1200mm. Polixeni Papapetrou.

### Harvey Benge: My House, My Head

**Satellite Gallery** • 5 June – 17 June

**Opens** Tue 5 June 5.30pm

**Hours** Mon–Fri 10–5 (Tue to 7pm), Sat–Sun 10–3.

**Where** cnr St Benedict's St & Newton Rd, Auckland City

**T** 307 6416 • **W** www.satellitegallery.co.nz

Harvey Benge is best known for his evocative and mysterious images made in the world's cities. Fascinated with the notion of parallel lives and the universality of life everywhere his pictures explore the strange democracy of non-places. With a passion for the photo-book, working with publishers in Britain, France and Germany his picture series have been published prolifically with eleven editions to date. His work has also been shown in public and dealer gallery shows across Europe including Britain, France, Holland, Germany, Poland and Italy. This exhibition, *My House-My Head*, represents a departure from his usual areas of investigation. Here Benge turns his lens on himself and looks inside his house and inside his head revealing elements of his life and what's important to him.



5. *My House My Head*. Harvey Benge.



**Harvey Benge**  
Sat 9 June • 2pm

ART



### Self Conscious

**Seed Gallery • 13 June – 24 June**

**Hours** Tue–Fri 10–5, Sat–Sun 11–4. **Preview** Tue 12 June 6–8pm.

**Where** 23a Crowhurst St, Newmarket, Auckland • **T** 522 5360

Natasha Cantwell, Carolin Casey, and Conor Clarke each respond in kind to the social and physical climate of our increasingly egocentric and industrialised world.

Situated between a suburban and industrial space, Carolin Casey's work looks at the transitory nature of emotional and psychological states in relation to the seeming permanence of man-made structures. Natasha Cantwell re-interprets the genre of Social Documentary for the self-conscious and self-aware climate we live in today. Conor Clarke deals with themes of post-colonialism, control, normalisation and social conditioning. Through montage and digital manipulation, her work demonstrates a domestication of the landscape.

**seed.**



1. Stevie. Natasha Cantwell.

### Jago Neal: Glimpses of Gaia

a photographic tribute to Aotearoa using liquid light

**Signal Gallery • 27 May – 23 June**

**Hours** Tue–Fri 10–5, Sat–Sun 10–4.

**Where** 717 Swanson Road, Swanson, Waitakere City

**T** 833 3479 • **E** signalgallery@xtra.co.nz



2. Untitled. Jago Neal.

### You can only know what I tell you...

Kirsty MacDonald

**Stanbeth House • 9 June – 24 June**

**Hours** Fri–Sun 11–4 or by appointment.

**Where** Level 1, 24-26 Custom St East, Britomart, Auckland City

**T** 307 7055 • **E** kirstyphoto.festival@xtra.co.nz

ART

A (mock) retrospective examining the relationship between our memories of the past & the person we are at present. These photographs reveal a fascination with objects; exploring how the things we surround ourselves with become maps of our lives, each revealing a tiny aspect of who we are with its individual story. Beautiful autobiographical photographs with a sentimental edge.

3. Self Portrait with Swan (diptych). Kirsty MacDonald.



4

### Afterlife

**Snowwhite Gallery • 18 June – 6 July**

**When** Mon–Fri 10–4.

**Where** Unitec Building 1, Gate 1, Carrington Rd, Mt Albert

**M** 021 255 3994 • **E** [vtphotography@xtra.co.nz](mailto:vtphotography@xtra.co.nz)

The term 'afterlife' for many of us conjures up the concept of life after death, a continuation of existence. It is a belief held by many that the choices we make in this world determine the success of our transition and our existence in the next world. Often what is perceived to be the end or death of something is merely an event that signifies a change where the inevitability or opportunity for the birth of something else comes to light, whether it be extraordinary, atrocious, subtle or nondescript. It is, however, still a continuation of existence determined by our experiences and the choices we may make in this life.

*Afterlife* is a photographic exhibition that explores the concept of a next life, another life, the continuation of life and the tell-tale signs of transition and change ... past, present and future ... that we observe daily; a concept that lends itself so aptly to the progression and emergence of contemporary photographers today such as artists Amelia Keenan, Amy Clarke, Daniel Rose, Jessica Hill, Milana Radojic, Nikki Barrett, Sam Hartnett and Troy Goodall. Included also are works by Deborah Smith and Haru Sameshima. Curated by Vicky Thomas.

4. Yeah Yeah Yeahs. Milana Radojic.

SNOWWHITE

### Barbie Cope: Emigration

**Satellite Gallery • 19 June – 1 July**

**Opens** Tue 19 June 5.30pm.

**Hours** Mon–Fri 10–5 (Tue to 7pm), Sat–Sun 10–3.

**Where** cnr St Benedict's St & Newton Rd, Auckland City

**T** 307 6416 • **W** [www.satellitegallery.co.nz](http://www.satellitegallery.co.nz)

Cope explores the universals of suffering and hardship endured by women and children, focusing on times of immigration. Her contemplative perspective and indepth research provide rich content to her poignant work.

ART



### Summer on the Rocks

**West Coast Gallery • 26 May – 17 June**

**Hours** Thu–Sun 10–5.

**Where** The Old Fire Station, Piha.

**T** 812 8029 • **W** [www.westcoastgallery.co.nz](http://www.westcoastgallery.co.nz)

A photographic celebration of the wonders and diversity of summer on the West Coast as seen through the lens of enthusiastic local amateur and professional photographers. A wide range of subjects, all stimulating and thought-provoking, showing why this area of West Auckland is loved and treasured by all.



1. Pohutukawa. Andrea Barnes.

### F G Radcliffe: Point of View

**Central Library • 1 May – 30 June**

**Hours** Mon–Fri 9.30–8pm. Sat 10–4. Sun 12–4.

**Where** Exhibition Room, 2nd Floor, Auckland Central City Library

**T** 377 0209 • **W** [www.aucklandcitylibraries.com](http://www.aucklandcitylibraries.com)

Auckland City Libraries holds a collection of over 2000 glass plate negatives showing scenic views of New Zealand from Northland to Stewart Island. The photographs show small rural towns and large cities, street scenes, gardens, buildings and beaches from the early part of the 20th Century. The provenance of this collection is unknown though it is assumed that they were used for the production of postcards. It was once believed the collection was the file of the Tourist Postcard Company, but this has since been disputed.

Most of the negatives in the collection were taken by Frederick George Radcliffe. Born in Liverpool in 1863, Radcliffe ventured to New Zealand in the 1890s. He began his life in New Zealand as a farmer, but his interest soon turned to photography. He became well regarded as a scenic photographer and spent 20 years of his life touring the country taking photographs. From 1909, with the help of his wife and one of his daughters, he operated a postcard business from his home in Whangarei. Radcliffe died in 1923.

This exhibition shows a sample of photographs printed from this extensive collection allowing us to view New Zealand as it was almost 100 years ago.



2 & 3. Frederick George Radcliffe Collection.

IDENTITY



### Isabel Sutherland: RIP Rust in Peace

**Huia Settlers Museum • 2 June – 1 July**

**Hours** Sat–Sun 11–4 (also Queen’s Birthday Monday).

**Where** Huia Rd, West Auckland (opposite Karamatura Park entrance).

**T** 811 8741 • **E** art.therapy@xtra.co.nz

A tribute to old vehicles, formerly loved, but now left for rust and weather to write new lines on their once smooth forms.

There is a fascination in the vehicle relics abandoned in the countryside to be transformed by nature. What story could they tell as they slowly oxidise to dust in the dance of rain and time? Isabel Sutherland has captured the subtle beauty waiting to be found in these wrecks of a bygone era as they journey to oblivion.



4. *Moreere*, Isabel Sutherland.

5. *Green Red Truck*, Isabel Sutherland.



**Isabel Sutherland**

Sat 2 June • 2pm

Isabel will talk about the range of her artwork following the opening of the exhibition by Ward Councillor Carl Harding.

### Stepping Back In Time

**North Shore Libraries • 1 June – 24 June**

**Takapuna Library** The Strand, Takapuna • **T** 486 8460

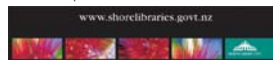
Open 9–8.30 (Mon/Thu) 9–5.30 (Tue/Wed/Fri) 9.30–4 (Sat/Sun)

**Devonport Library** Victoria Rd, Devonport • **T** 486 8527

Open 9–5.30 (Mon–Fri) 9–4 (Sat/Sun)

**W** [www.shorelibraries.govt.nz/](http://www.shorelibraries.govt.nz/)

The North Shore is known for its ferries, artists and writers, for beaches and the 'golden mile' of houses along the eastern coastline from Milford to Takapuna. The North Shore Libraries festival exhibition this year features historic views of the walks around Takapuna, Northcote and Devonport, sourced from the photographic collections of these three libraries. See the website for details.



6. *Nº 2 Huia Street, Devonport*, Unknown artist.

IDENTITY



### Certain Aspects

**Kura Gallery • 1 June – 29 June**

**Hours** Mon–Thu 10–6, Fri 10–8, Sat–Sun 10–4.

**Where** PWC Tower, 188 Quay St, Auckland City.

**T** 302 1151 • **M** 021 255 3994

**E** aucklandsales@kuragallery.co.nz • **W** www.kuragallery.co.nz

An exhibition showcasing works by emerging photographers, all of Maori descent. These works have come from the artists developing their own sense of the contemporary bicultural Aotearoa New Zealand they live in, the style as diverse as the content. Artists include Aissha Woodcock, Rochelle Huia Smith, Straton Heron and Vicky Thomas.



2. Untitled. Rochell Huia Smith

3. Toto. Vicky Thomas.

### Ruth Ames: To Dance

**Marco Gallery • 8 June – 14 June**

**Hours** Mon–Fri 10–5.

**Where** 47 New North Rd, Eden Terrace, Auckland.

**T** 308 8485 • **E** info@marco.org.nz / photoaims@clear.net.nz

**W** www.marco.org.nz

A journey through the world of dance as interpreted by Ruth Ames for Auckland Festival of Photography June 2007. Dance expresses life as it is felt and understood. It is influenced by many dynamics which include culture, race, religion, era, as well as ideas generated by choreographers and other artists.

Ruth Ames has photographed dance in Auckland extensively over the past seven years, particularly during dance works, performing arts and cultural festivals. Her work reveals a wide range of dance and expresses its rich texture – capturing the dancer's interpretation of these dynamics in photographs that live beyond that elusive moment.



1. Stillness in Movement. Ruth Ames.

4. Salsa in Motion. Ruth Ames.

IDENTITY





**Willow Harfleet: Locals**

**Hobsonville Church** • 7 & 8 June 3.30–5.30 / 9 June 10–2

**Massey Library** • 11 June – 24 June

Hours (library) Mon–Fri 9–5.30. Sat–Sun 10–4.

Where Hobsonville Church, Scott Road, Hobsonville.

Massey Library, cnr Don Buck Road & Westgate Drive, Massey.

T 839 2260 • E badwakk@xtra.co.nz

Locals is a collection of photos taken by Willow Harfleet of people who either work or live in the Whenuapai area.

Willow is a nine-year-old girl and her photos offer a unique perspective into a child's view of the 'locals'.



5. The Milkmen. Willow Harfleet.

**Where in Waitakere?**

**Waitakere Library & Information Services** • May & June

W [www.waitakere.govt.nz](http://www.waitakere.govt.nz)

Waitakere Library and Information Services will be running a series of workshops and events to celebrate the Auckland Festival of Photography.

Learn how to make the most of your digital camera by attending one of our free workshops\*. Then put your new skills to the test by taking part in one of our digital photography competitions. Before the Festival, during May we will be asking Waitakere Library members to submit their unusual photos of Waitakere City. The ten winning photos will be displayed in all of the libraries.

During the Festival in June we invite you to view the winning photos and take part in our giant photographic treasure hunt! If you find all ten locations you could win a fantastic prize!

\* Waitakere library membership will be required for workshop attendance or competition entry.



**LEARN IT Online**

IDENTITY

6. Untitled.



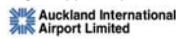
## Manukau Flightpath

**Manukau Square** • 1 June – 24 June

**Hours** Daily.

**Where** Manukau Square, Manukau City • **T** 263 7100

An outdoor display of aerial photography. The exhibition shows a bird's eye view of the flightpath to Auckland International Airport which sees dozens of planes a day flying over the central suburbs and centre of Manukau City. A series of large format photo flags flying above the ground provides an elevated view, which sees the audience looking towards the sky to see the earth they stand on. It provides a sense of the landscape from the air and builds into a sense of identity around the communities it is home for. Images supplied by the regional GIS project. Exhibition specially created for the Auckland Festival of Photography.



1. Crater Hill & Pukaki Lagoon, Manukau City.

## Very Un-Shore

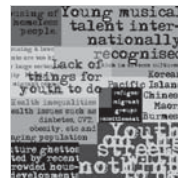
**The Depot** • 2 June – 14 June

**Opens** Sat 2 June 2pm.

**Hours** Mon–Sat 10–5.

**Where** 28 Clarence St, Devonport • **T** 963 2331

**W** [www.depotartspace.co.nz/veryunshore](http://www.depotartspace.co.nz/veryunshore)



Y  
T  
T  
T  
N  
E  
D  
—

In *Very Un-Shore* participants are asked to challenge stereotypes of the North Shore, with images that expose its un-familiar, un-expected, un-appreciated, un-known or un-becoming elements. For example, the North Shore is a multicultural city with the largest Asian population in the country. It is rich in green belts and reserves. It is home to New Zealand's only maximum security prison. Its beaches, which add to the Lifestyle City brand, are frequently affected by pollution during summer. The North Shore is a repository of young musical talent that is making its mark on the international music scene.

This exhibition will also feature some of the outcomes of a recent survey undertaken by North Shore Community and Social Services relating to critical social issues for the Shore. *Very Un-Shore* involves fifteen photographers from secondary school students to established and well known photographers.

